

Evaporative Cooler for Golf Cart

EC-V-05S



**A great way to stay cool on the golf course.
EvapoCooler Wet or Dry Breeze technology**

What is EvapoCooler?

EvapoCooler is a misting system which provides a refreshing cool breeze designed for golf carts.

EvapoCooler will keep golfers cool by providing a low temperature cooling breeze.

A powerful fan blows air that is cooled by the evaporation of fine mists, and golfers can feel a cool breeze that is 8°C lower than the surrounding temperature without getting wet.

Powerful Fan

A powerful fan blows air that is cooled by the evaporation of fine mists, and golfers can feel a cool breeze without getting wet

Easy Installation

Compact and Lightweight.

EvapoCooler is an easy to install misting system for golf carts

Water-resistant

Both fan and control unit are water-resistant, so you don't have to worry about covering them in the rain

EvapoCooler EC-V-05

Cool Breeze

Powerful fan

Using a dial type fan speed adjuster, EvapoCooler can easily adapt to suit multiple environments including windy conditions.

Adjustable misting

The flow can be adjusted to provide a dry or damp cooling breeze.



Check out YouTube

Easy Installation

Compact · lightweight fan

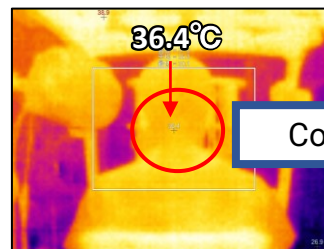
Fan weighs only 700g. It can be attached to golf cart's frame.

Compact control unit

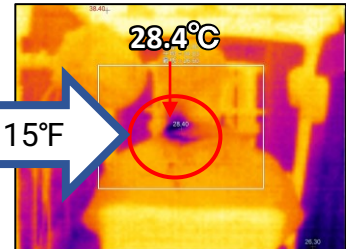
Control unit can be placed on a flat surface such as a basket behind the seat or frame.

Energy efficient.

EvapoCooler can be plugged into a power source or connected to golf cart's battery. EvapoCooler only requires a maximum of 50W (35W if only 1 fan is used), so the battery usage is not significant.



Before



After

Cools 15°F

[Condition] Distance: 2 feet, Water consumption: 500ml/h, temperature: 90F, Humidity: 43%

Easy to install/use! Only 3 steps!!

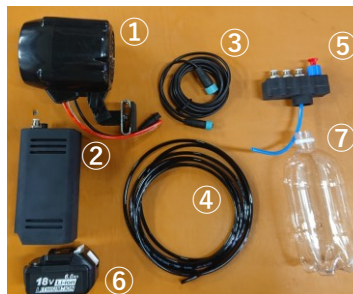
① Install the control unit and fan

Put the control unit in a bag, and hook it to the basket. Fix the fan to the frame.

② Put water in a bottle and install battery pack

③ Push the button

Includes:



Included in EC-V-05

- ① Fan
- ② Control Unit
- ③ Fan cable
- ④ Tubes(water and air)
- ⑤ Connector

Not included

- ⑥ Battery
- ⑦ Plastic bottle

Model	EC-V-05
# of Fan (with a nozzle)	One or Two
Amount of water used	Adjustable (0 ~2L/hour/nozzle)
Fan Speed setting	Dial type
Power Consumption	Maximum 50W (2 fans)
Voltage	DC18V (Power tool battery)
Dimensions (mm)	200 x 140 x 165
Weight(kg)	2.7kg (Control unit)

Designs and specifications are subject to change without notice.



ETG Japan Limited

1-1-5 Omori-Kita, Ota-ku, Tokyo, Japan
TEL: 81-3-6809-6810 <https://www.etg-japan.com>